

SUFFOLK HOUSE

TO LET

Suites from

500 sq ft / 46.15 sq m

George Street Croydon CR0 1PE



Croydon Tram



BoxPark



East Croydon Station

Description

Suffolk House is a low rise building on ground and three upper floors. The large floor plates are divided into suites and provide light airy space around two light wells.

There are two main entrances, one at each end of the building. The ground floor is a mix of retail and cafes mainly, including a Sainsbury's store.

The building offers a range of office suites in varying sizes.

Location

Suffolk House is located in a prominent position on the corner of George Street with Park Lane, within the prime office area of East Croydon.

The mainline rail station at East Croydon is two minutes' walk and the adjacent BoxPark facility provides 40 pop up cafes. George Street is one of the main tram routes in the town.

The two key shopping malls Centrale and Whitgift Centre are within five minutes' walk, as is the main shopping zone in-between the two retail centres.

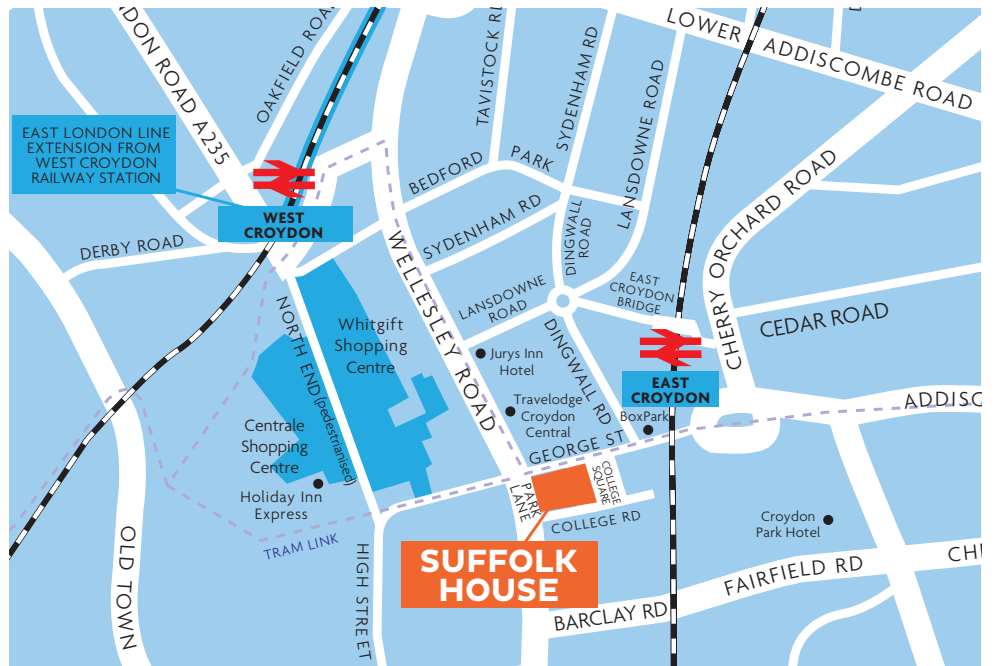


Highlights

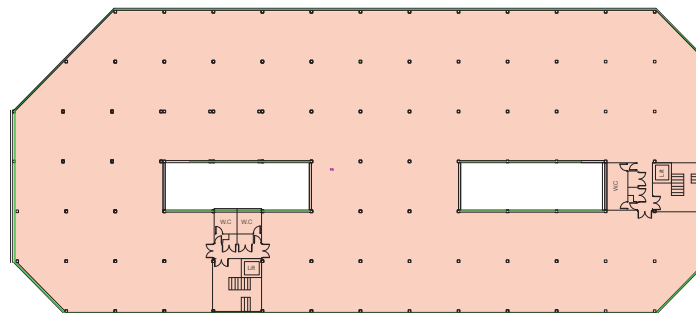
- On site security and management
- Commissionaire
- Cost effective accommodation
- Lifts
- Central heating
- Suspended ceilings
- Fluorescent lighting
- Carpeting
- Newly refurbished toilets

EPC

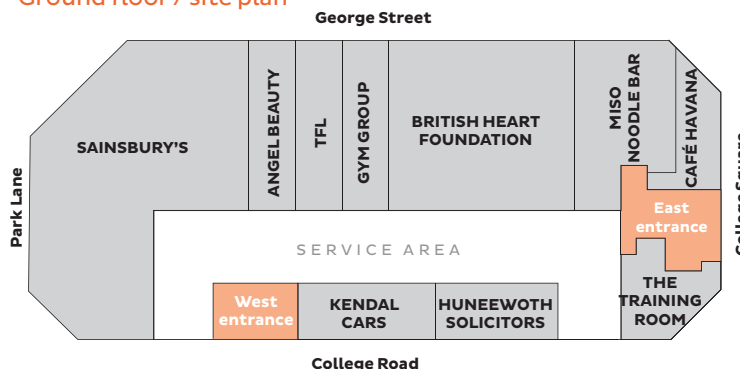
The building has an energy efficiency rating of C.



Typical upper floor



Ground floor / site plan



Lease

New leases direct from the landlord on terms to be agreed.

Availability

Please refer to the letting agents for current availability of offices and shops.

Viewing

By appointment through sole agents.



Vanessa Clark
vanessa@sinclairclark.co.uk