



TO LET/ MAY SELL

Self-contained air
conditioned offices

1,181-7,407 SQ FT

109.71-688.13 SQ M

14-15
MANDELA
STREET

CAMDEN NW1 0DU

Warehouse style offices in the heart of Camden

With an abundance of natural light, the space offers well configured open plan offices, as well as bike storage, car parking, shower facilities and WCs. The property is arranged over four floors, each suite is self contained with its own entrance and kitchen.



Wooden
floors



Air
conditioning



Cabled



Secure bike
storage and
lockers



8 person
passenger
lift



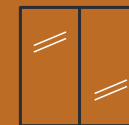
Excellent
natural
light



Car
parking



Showers



Full height
windows



Terraces/
Balconies



ACCOMMODATION (NIA)

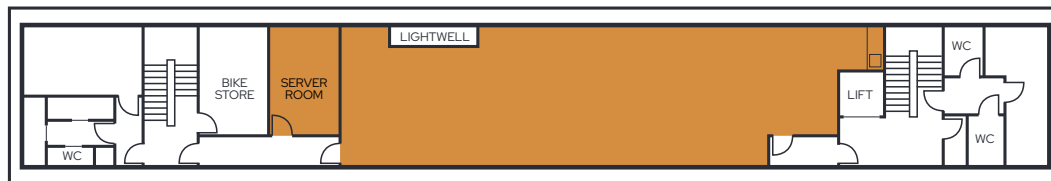
On a Net Internal Basis in accordance with the RICS Code of Measuring Practice latest edition.

Independent measurement report available on request.

FLOOR	SQ M	SQ FT
Lower Ground	165.83	1,785
Ground *	143.53	1,545
First	229.47	2,470
Second **	149.29	1,607
TOTAL	688.12	7,407

* Includes 364 sq ft reception

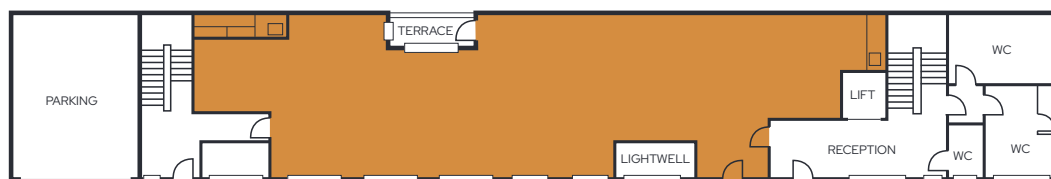
** Excludes 267 sq ft mansard area



LOWER GROUND FLOOR



FIRST FLOOR



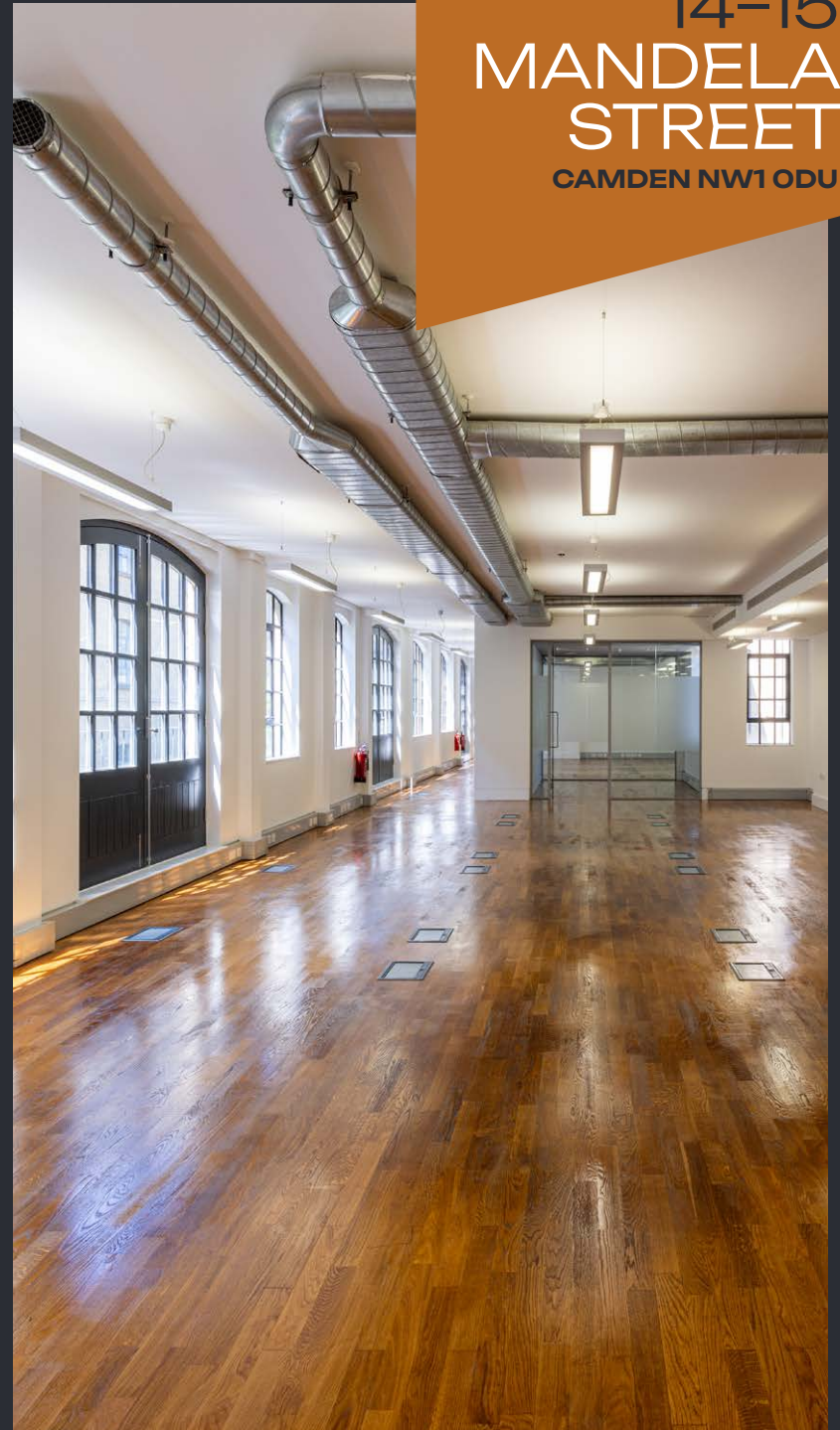
GROUND FLOOR



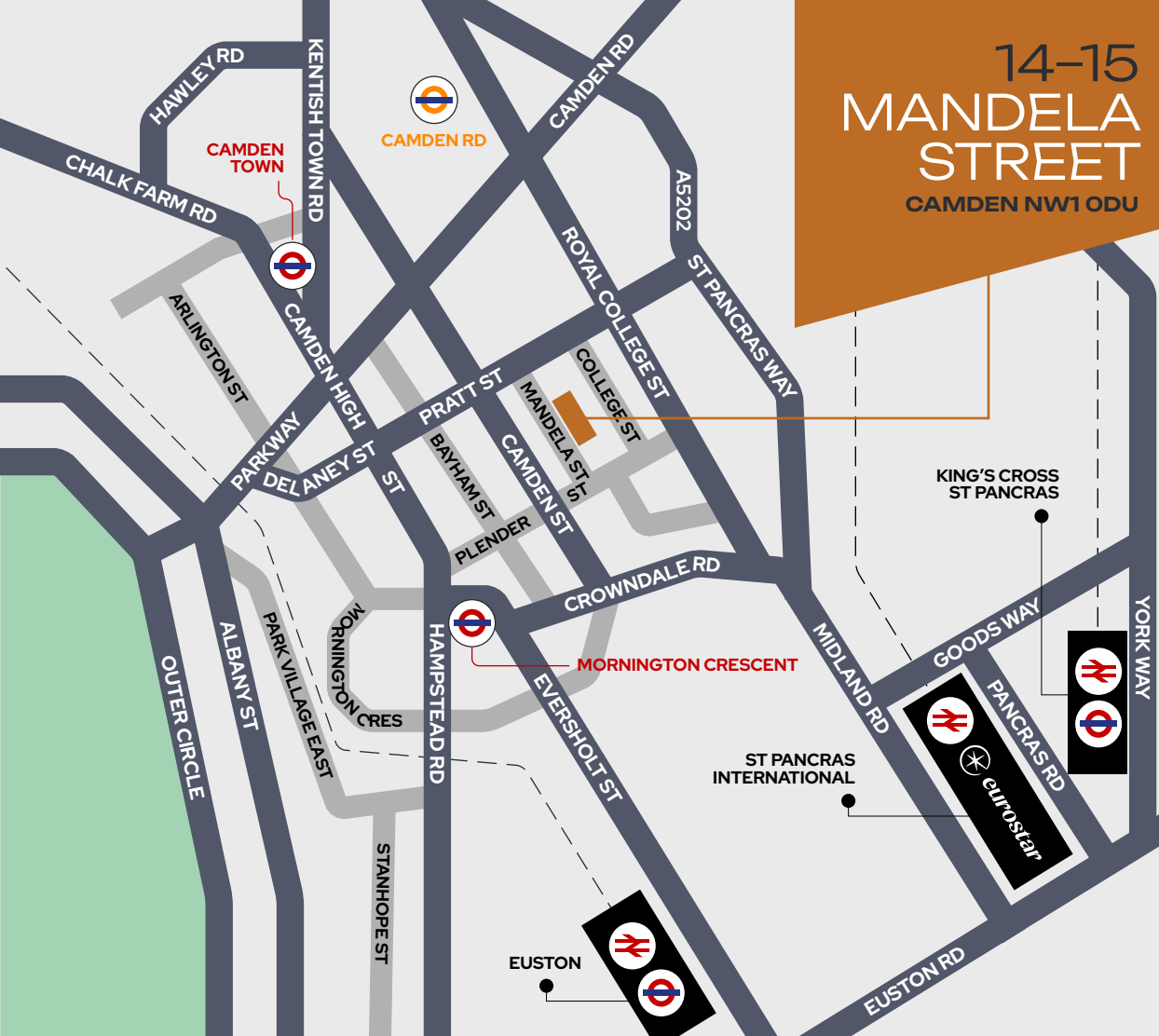
SECOND FLOOR



14-15
MANDELA
STREET
CAMDEN NW1 ODU



14-15 MANDELA STREET CAMDEN NW1 0DU



LOCATION

The building is located on the east side of the street. It is directly opposite Centro Buildings which is a hub of commercial activity and houses a café and fitness centre.

Camden Town (Northern Line), Mornington Crescent (Northern Line), Camden Road (London Overground) and numerous bus routes along Camden High Street are all within easy walking distance.

TERMS

- Lease: The entire building is available on a new lease-terms to be agreed.
- Freehold: May be available for sale-terms upon application.
- Floor by Floor: Alternatively available on a floor by floor basis depending on level of interest.
- Vacant possession of 2nd floor from July 2024 and ground floor held on a short term licence.

EPC

Rating B-27.

FOR MORE INFORMATION PLEASE CONTACT:



020 7462 1340
chasesinclairclark.co.uk

VANESSA CLARK

07889 164772

vanessa@sinclairclark.co.uk

JAMES CLARK

07947 449372

james@sinclairclark.co.uk



These particulars are not an offer or contract, nor part of one. You should not rely on statements by agents, by word of mouth or in writing ("information") as being factually accurate about the property, its condition or its value. The agents have no authority to make any representations about the property, and accordingly any information given is entirely without responsibility on the part of the agents, seller(s) or lessor(s). Any reference to alterations to, or use of, any part of the property does not mean that any necessary planning, building regulations or other consent has been obtained. A buyer or lessee must find out by inspection or in other ways that these matters have been properly dealt with and that all information is correct. The VAT position relating to the property may change without notice. July 2024.